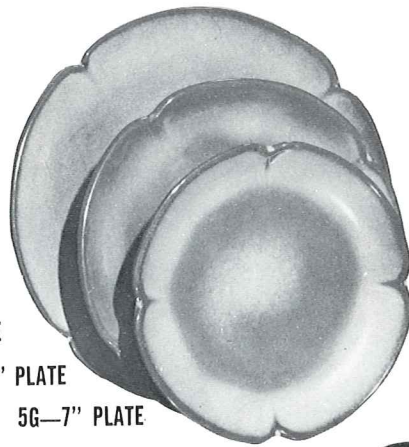




*5V—2 QT. BAKER/BEAN POT
*5V/W—BAKER/W WARMER SET



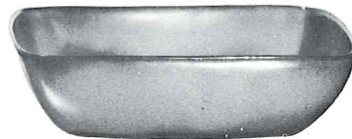
5F—10" PLATE

5FS—9" PLATE

5G—7" PLATE



*5W—3 QT. BAKER/BEAN POT
*5W/W—BAKER/W WARMER SET



*5NS—9" VEGETABLE



*5CC—5 OZ. TEACUP



*5M—16 OZ. MUG



*5A—12 OZ. CREAMER

*5B—SUGAR WITH LID



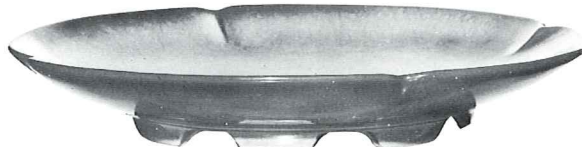
5C—CUP
5E—5½" SAUCER



*5H—SALT & PEPPER



*5N—4½" QT. BOWL



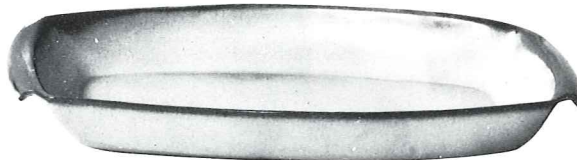
5FC—15" CHOP PLATE



*5LC—6 OZ. JUICE



*5L—12 OZ. TUMBLER



5P—17" PLATTER

*5Q—13" PLATTER



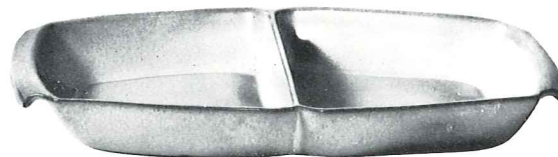
*5DB—6 OZ. SUGAR



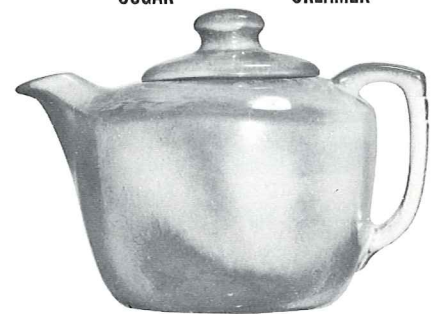
*5DA—6 OZ. CREAMER



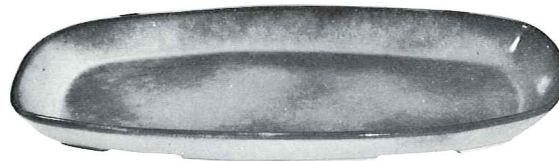
5XL—20 OZ. BOWL
5X—14 OZ. CEREAL
5XS—9 OZ. FRUIT



*5QD—13" DIVIDED BOWL

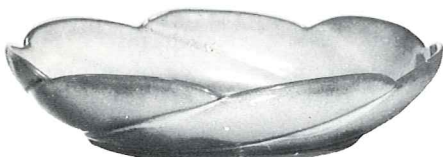


*5TL—12 CUP TEAPOT



5QS—13" PLATTER

*5PS—9" TRAY



*218—12" BOWL

*6P—11" PLATTER



*6S—TWO SPOUT GRAVY



*6T—6 CUP TEAPOT



*6J—2 CUP TEAPOT



5D—3 QT. PITCHER

THIS PAGE AVAILABLE IN BROWN SATIN, DESERT GOLD, PRAIRIE GREEN & AUTUMN YELLOW EXCEPT WHERE NOTED*.

*AVAILABLE IN ALL COLORS—ADD 50% FOR FLAME.

SIZES ARE APPROXIMATE AND MAY VARY SLIGHTLY.